

Childhood Transportation

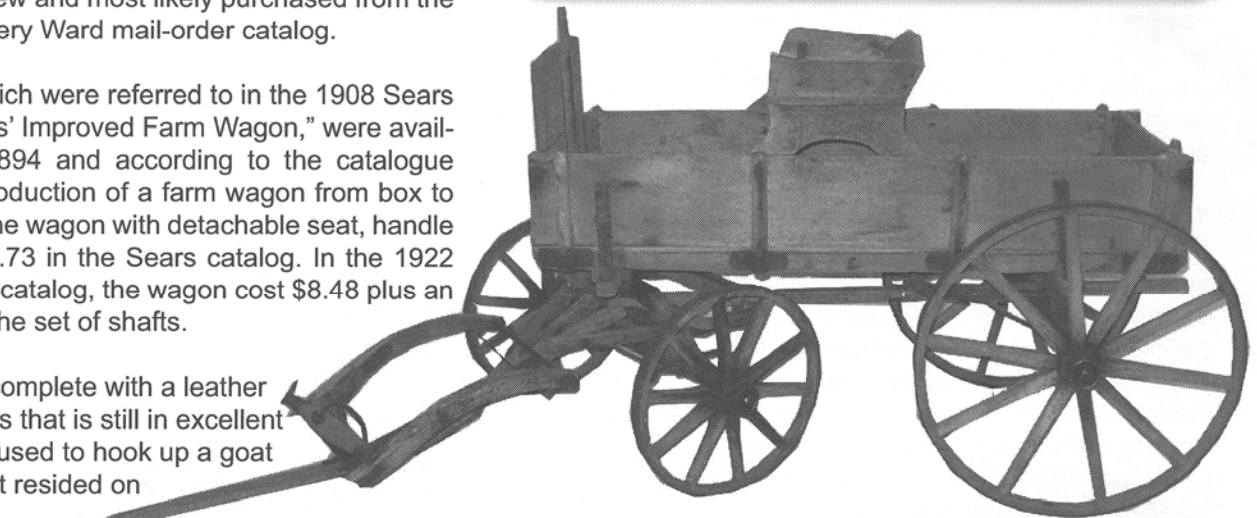
Anne (Michaelis) Swiggum of Mt. Horeb has generously donated to the museum a treasured family heirloom, the goat wagon that her father received as a young boy. Anne's father, Randolph Michaelis, was the oldest of 6 children of Emma (Pierstorff) and Henry Michaelis. The Michaelis family lived in Madison. Emma had one brother, Alex Pierstorff who had continued living and working on the family farm on Valley View Road south of Middleton. The farm had been purchased by their parents, Rudolph and Mary Pierstorff in 1904.

Randolph, Anne's father, worked on his Uncle Alex's farm in the summer when school was out and received the wagon from him in 1922 at around age 12. It is believed that it was brand new and most likely purchased from the Sears or Montgomery Ward mail-order catalog.

These wagons, which were referred to in the 1908 Sears Catalogue as "Boys' Improved Farm Wagon," were available as early as 1894 and according to the catalogue are "a perfect reproduction of a farm wagon from box to wheels." In 1908 the wagon with detachable seat, handle and shafts was \$4.73 in the Sears catalog. In the 1922 Montgomery Ward catalog, the wagon cost \$8.48 plus an extra 79 cents for the set of shafts.

The wagon came complete with a leather goat or dog harness that is still in excellent condition and was used to hook up a goat named Sammy that resided on the Pierstorff farm.

The wear on the wagon indicates many years of youthful enjoyment.



Above - Children with buckboard wagon (from the Henry Himsel family album, MHAHS archive), and goat wagon donated by Anne Swiggum.



Left - Mt. Horeb child with toy. An example of this scooter can be found in the museum's collections.



Right - postcard from William Ryan of Klevenville

A letter from the President:

I was reminded of the old saying of how time does fly when the Mt. Horeb Area Historical Society turned 35 in March. I was also reminded that many on our board and even more amongst our membership knew little about our history, so I thought I'd share it.

Being an unusual child, and after years of operating a small museum and nature trail on our family farm in Springdale, I decided to take my passion of all things old to a different level. In November 1974 I talked to Mt. Horeb Librarian Gladys Martin about the possibility of a local historical society. Gladys was excited about the idea, but said we should wait until after the holidays to pursue the idea further.

Between that initial contact and February 1975 Gladys busied herself calling individuals she felt would make a good core group: a Madison attorney and a Wisconsin Historical Society curator who both lived locally; longtime business people; and others interested in area history and material culture.

The first meeting was held at the Mt. Horeb Public Library in March 1975 in the middle of a blizzard, making the two-mile trip back home to our farm rather memorable. Despite this stormy beginning a group of about 15 area people gathered. Not knowing what it meant at the time, I served as acting president and Gladys handed me a book of Robert's Rules of Order. By June 1975 we elected Robert Pekowsky as president; Forest Johnson, vice president; Richard Horn, treasurer; Jan Ludwig, secretary; and board members Gladys Martin, Olive Skindrud, Otto and Irene Gilbertson and myself. On June 5 of that year

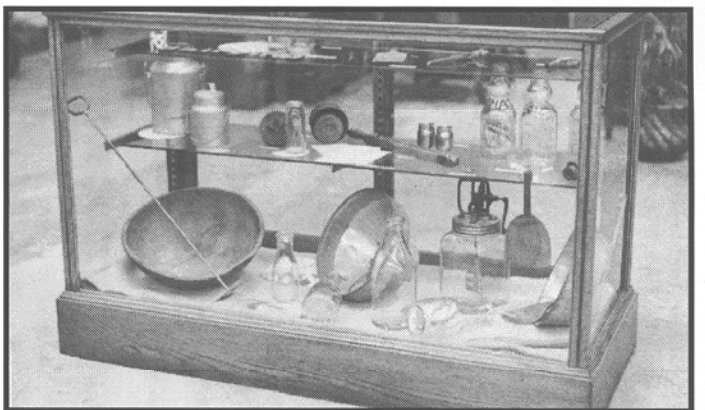
Under Bob Pekowsky's presidency we sought out space for a museum in, among other possibilities, the old Methodist Church at Blue Mounds and the Mt. Horeb depot. In 1977 we were given space on the third floor of the Mt. Horeb Municipal Building.

When Bob realized that he would be performing extended duty as a newly elected Dane County judge, Richard Horn, who was a Wisconsin Historical Society curator, became the second elected president. It was a sad day for everyone when Richard was diagnosed with a brain aneurysm and later succumbed to it.

It was at this time that I stepped into the presidency determined to build on Richard's legacy of professional museum standards. Our next president was Karen Brickner, who was a voracious volunteer in many local organizations and worked 20 years for Dane County. Again, in 1995, shock struck the Historical Society when Karen passed away suddenly. I would again assume the presidency.



First board of directors seated L-R: Brian Bigler, Irene Gilbertson, Otto Gilbertson and Richard Horn. Standing are Jan Ludwig, Forest Johnson, Olive Skindrud, Gladys Martin. Not pictured: Bob Pekowsky.



One of the Society's first exhibits celebrated June Dairy Month in the lobby of the State Bank of Mt. Horeb (now AMCORE).

Historical society organizing March 6

An organizational meeting to begin a Mount Horeb Area Historical Society has been set for Thursday, March 6, at 8 p.m. in the Mount Horeb Public Library.

"History offers something for everyone, young and old," say the organizers. They hope that anyone interested in preserving the area's history, "which shows where we came from and how we got where we are," will attend the meeting.

we incorporated with the Wisconsin Historical Society.

In our first two years, and to inspire interest in the organization, we borrowed historical objects, photos and manuscripts and created temporary exhibits in glass cases located in the State Bank of Mt. Horeb (now AMCORE) and the Mt.

Horeb Public Library (now the site of Mt. Horeb Telephone Company). We also held larger exhibits in the lobby of the Mt. Horeb Municipal Building (now lower-level village hall) and at the library.

The Mount Horeb Area Historical Society

While president, Karen held a very optimistic outlook for the historical society's future, often stating, "When I win the lottery ..." This optimism greatly inspired me and gave all those involved at the time of Karen's death a renewed interest in making the organization bigger and better.

In 1996 this optimism, along with severe growing pains, played a big role in the decision to acquire the former Folk Museum building at 100 S. Second St. for a new museum. More than 300 people turned out for the grand opening, which featured the exhibit "Alva Webber's Small Town Wisconsin." Thousands of visitors have since viewed the museum's permanent and changing exhibits. The former museum space in the municipal building became the society's collections storage facility.

Through the years I have felt very privileged to volunteer with so many wonderful and memorable individuals. I would be remiss if I did not mention the society's first curators, Gladys Martin and Christine Helmenstine. They were followed by Marlyn Grinde, who still serves in this capacity. Through the years Irene Gilbertson and Lee Underwood have assisted Marlyn. Marietta Gribb has been the curator of costumes and dolls since the 1980s. Tim White has handled photos and Donna Read is in charge of archaeological collections and business and advertising novelties. In recent years Laurie Boyden has taken on the tasks of volunteer coordinator, museum director and office manager.

Since those humble snowy beginnings thousands of members, friends, donors and volunteers have built the Mt. Horeb Area Historical Society into one of Wisconsin's premier historical societies. The Wisconsin Historical Society has given us its highest award for excellence in all-around programming and exhibit presentation. We have saved from destruction, or removal, thousand of artifacts, photos, manuscripts, books, letters, maps and records from the very rare to the very common. We have held dozens of entertaining and educational programs, in equally as many locations throughout southwestern Dane County. Our photos, manuscripts and artifacts have appeared in numerous books, on film, in publications and exhibits locally, and at the state and international levels.

Now, as we enter this new phase of our growth through the construction of the Southwestern Dane County Heritage Center, we have taken time to reflect on our own past and our extensive achievements while looking forward to new beginnings and asking ourselves: Where does time go?

Thank you all for your sincere dedication.

- Brian J. Bigler



Olive Skindrud and Christine Helmenstine discuss displays with a visitor in the old bank lobby of the Mt. Horeb Municipal Building.



Receiving the Reuben Gold Thwaites Trophy in 2001: (L-R) Dr. George Vogt, director of the Wisconsin Historical Society; President Brian Bigler; Treasurer Darlene Nowak; Dr. Charles Haas, chairman of the awards committee.

Book Publishing Planned For 2010

Mt. Horeb Area Then & Now: Celebrating Mt.
Horeb's 150th, Dane County's 175th

A coffee-table book will draw on the Historical Society's vast photographic collections. Using these historic images, contemporary photographers will be called upon to re-shoot the same view as it appears in 2010-2011. An overview of the area's history will appear in the book's preface and accompanying photo captions.



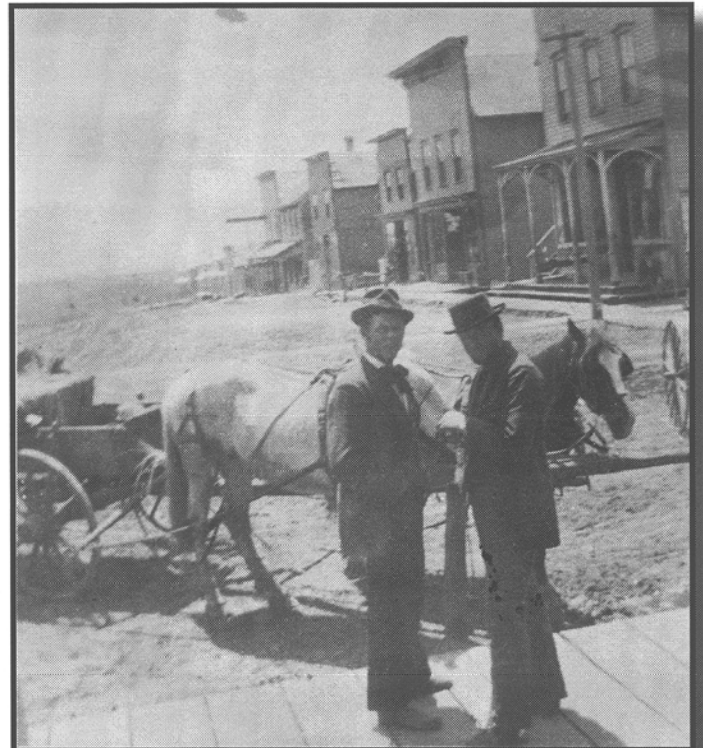
Above - Scenes from 1961 Centennial

Museum Musings

By Laurie Boyden

The Mt. Horeb Area Museum and Shop will be opening on Friday, May 7, 2010 and we are looking forward to another season of visitors interested in the history of our community and southwestern Dane County. Once again, we hope to be 100% open. Of course, this can only happen with the help from our reliable volunteers who dedicate a few hours each month to greet our guests introducing them to the self-guided exhibit in the museum and helping take care of customer purchases in the museum shop. The annual sign-up meeting was held on Saturday, April 17 at the museum, but you can still sign-up. We are always in need of additional volunteers! So if you're interested or anyone else you may know that would be interested in volunteering contact Laurie at 437-8901. If your time is limited and you still want to help out, substitutes are also needed to fill in when something comes up for a scheduled volunteer so please don't hesitate to let us know. We appreciate the time you set aside to help us out.

The Museum Shop is a great place to find unique gifts and books including a variety of Wisconsin and heritage items, cookbooks, reproduction wares, household decor, cards, prints and troll figurines. Hours for the Museum and Shop are Friday and Saturday 10 a.m. – 4 p.m. and Sunday 12:30 – 4 p.m. We are located at 100 S. 2nd Street in Mt. Horeb, WI. For information call (608) 437-6486 or check our website: www.mounthoreb.org



Above - Mt. Horeb Main Street scene 1899

Future New Exhibits at the Mt. Horeb Area Museum

Stories in Stitches: Quilts of Southwestern Dane County

Opening May 2011 in the Centennial Gallery of the Mt. Horeb Area Museum. Quilts housed in the society's extensive textile collections will be selected for their poignant stories. Examples will range in years 1855-2001 and will represent the changes and life experiences that have occurred in southwestern Dane County, stories of anniversaries and reunions, settlement and war, mortality and the Great Depression.

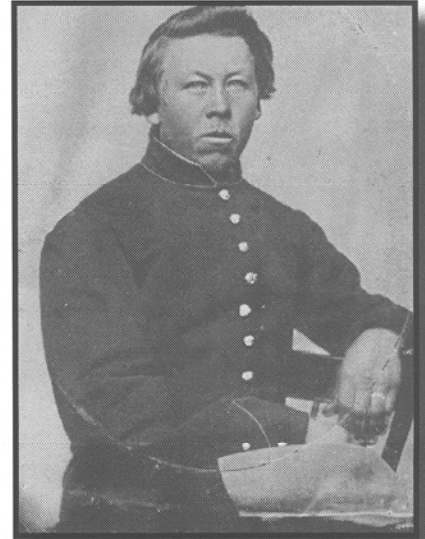
Companion exhibit: Quilts of Dane County: A Retrospective

Additional quilts from the Historical Society's textile collections not selected for Stories in Stitches will be exhibited for three days throughout the museum's galleries. The exhibit will be held during Mt. Horeb's Fall Festival in October. A modest admission will be charged.

Ethnicity & Civil War

Shortly after their arrival, southwestern Dane County's immigrants from Germany, Ireland, Norway, Switzerland and Scotland found themselves embroiled in national conflict. What were their reactions to this war?

May 2011 is the premiere of this case exhibit at the Mt. Horeb Area Museum. The goal is to shed light on this important question. Letters sent from the front lines, photos and artifacts, all part of the museum's holdings, will bring this story to the local level for the first time.



Above - Civil War tintype of Christian Anderson, recently donated to the Historical Society by Alice Punwar
Below - Mt. Horeb Sewing Class



An Artist for an Artist

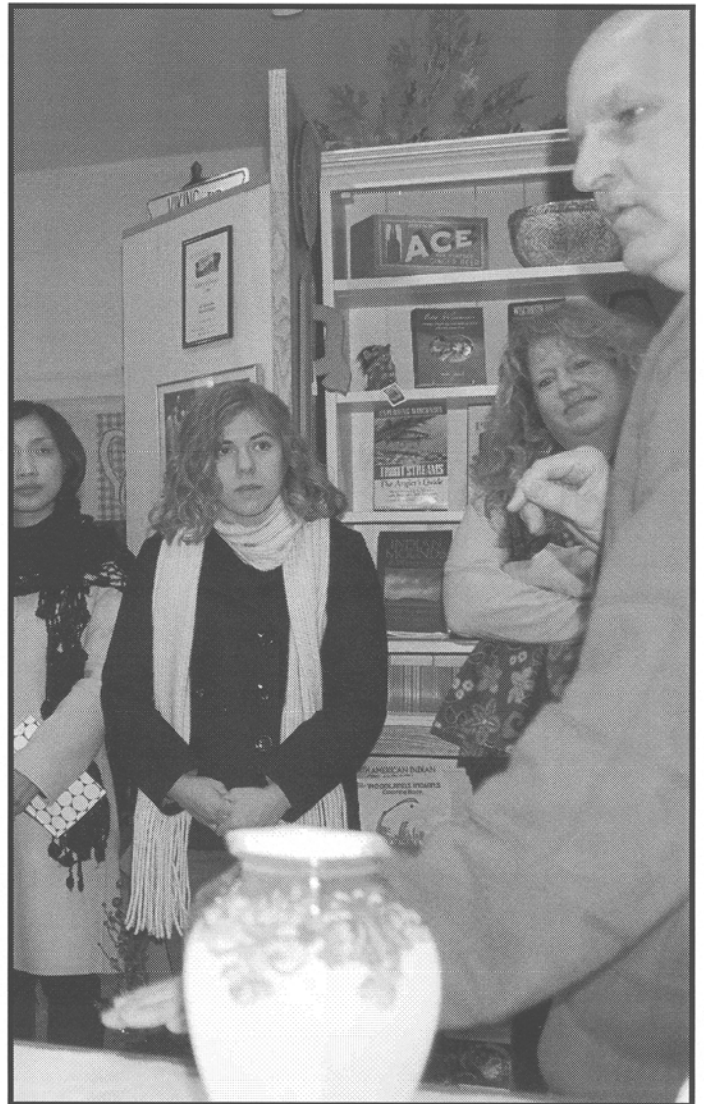
We wish to thank local artist Janet Anderson, who has been spending Wednesdays processing the extensive Tom Brown cartoon art collection gifted to the Society in 2009 by Timothy and Susan Deneen of Evansville. Janet was given a crash course in museum catalog technique, and has been sorting, researching and placing drawings and accompanying correspondence in acid-free Mylar folders and boxes. We also wish to thank Bruce Fortney, another local artist, for helping to research the collection's varied additional cartoon artists.



An Exhibit Study

On Feb. 1, the museum played host to 15 University of Wisconsin graduate and undergraduate students from an exhibition seminar course taught by Professor Ann Smart Martin. While at the museum, President Bigler presented the students with information on creating an exhibit thesis, public involvement, research techniques and presentation.

The UW course is set up as a hands-on experience that will result in a public exhibit at the Watrous Gallery in downtown Madison's Overture Center. The exhibit, featuring late 19th- and early 20th-century Wisconsin women's handcrafts, is scheduled to open in December. It will feature artifacts from the Society's permanent collections. Professor Martin, Martha Glowacki, co-director of the Watrous Gallery, and Emily Pfotenhauer, outreach specialist at Wisconsin Library Services, are in charge of the course and exhibition.



The Mount Horeb Area Historical Society

Donate to History

The following items are being sought for the archives, collections and future exhibits:

- * Quilts (and their stories) made by, or used by, individuals in southwestern Dane County;
- * Photographs, paintings and written stories pertaining to southwestern Dane County's natural wonders;
- * Blasting plunger/box circa 1930s;
- * Mt. Horeb telephone directories from 1900-1930s and 1965-1984;
- * Mt. Horeb High School annuals from 1959 and 1986-2010;
- * Uniforms, stories and letters from southwestern Dane County veterans who served in the Vietnam, Persian Gulf, Iraq and Afghanistan wars;
- * Civil War stories, letters, papers, photos and artifacts created by, or used by, individuals of southwestern Dane County;
- * Items by southwestern Dane County artists in all media and forms: written, painted, recorded, carved, woven, sewn, etc.

If you have any of these items to donate contact Laurie Boyden on Wednesdays and Fridays 437-6486 or 437-8901



Above - Mt. Horeb residents show off their 1961 Centennial attire in front of Olson's Restaurant

New Challenge Grant Donors

December 31, 2009 - April 2010

Ralph L. Buechner
John F. Erb
Tim and Patti Fannon
Steve and Aimee Gauger
Eddie and Cheryle Goplin
Hands All Around Quilters
Fred Luhman
Mound Vue Garden Club
Mount Horeb Utilities
John and Catherine Schwenn

Thanks To All!



Generations Of Memories The Mt. Horeb Area Historical Society

☐

New
Membership

☐

Renewal
Membership

E-Mail

Society Membership Levels

☐

Individual
\$15.00

☐

Household
\$25.00

☐

Individual Lifetime
Membership \$250.00

☐

Benefactor
\$500.00

☐

Building Fund Donation

All contributions to the Society are tax deductible.

Mail to:

Mt. Horeb Area Historical Society
138 East Main St.
Mt. Horeb, WI 53572

Mt. Horeb Area Historical Society Board Of Directors

Brian J. Bigler – President
Al Colvin – Vice President
Connie Jo Zwettler – Secretary
Darlene Nowak – Treasurer
Gary Boley
Jane Burns
Marlyn Grinde
Shirley Martin
Doug Nesheim
John Pare
Peter Riphahn
Donna Read
Lee J. Underwood

Curators:

Marlyn Grinde
Lee J. Underwood
Donna Read
Marietta Gribb – Costume, Textiles, Dolls

Operations:

Laurie Boyden - Museum Director /Coordinator
Jane Burns - Newsletter Editor
Tim White - Newsletter & Website Editor

Archives Hours:

2nd & 4th Wednesday each month 12:30 – 3:00
3rd floor of the Municipal Building
138 E. Main St. Mt. Horeb WI
608-437-6486

Museum Hours:

Friday and Saturday 10 a.m. – 4 p.m. and Sunday
12:30 – 4 p.m. Located at 100 S. 2nd Street, Mt.
Horeb, WI.

Southwestern Dane County Heritage Center Progress

We are excited to announce that more than \$20,000 has been raised to date toward Phase II, the construction of the Southwestern Dane County Heritage Center. On Feb. 6, the Board of Directors hosted a brainstorming session allowing curators and collections volunteers to voice their space needs. It was decided that the board and curators would take research development trips to other museums and institutions in Wisconsin and Iowa to view their facilities. A master list of “needs” and “wants” was also developed.

Emphasis is being placed on creating the best collections care facility possible and this will be determined by the success of our fundraising efforts. Further emphasis was placed on office, meeting, public and exhibition space. The ultimate desire is to raise enough funds in Phase II to allow for the partial to complete construction of Phase III (additional space needed for public and exhibition spaces), thus eliminating Phase III entirely, and lowering future construction cost increases. Public and private contributions will determine the actual construction date.

F. Y. I. Your membership expiration date is printed on the mailing label of this newsletter. Please check to see if you are up to date through Jan. 2011 or beyond. If not, your membership is due. We appreciate your renewal and don't want you to miss a single issue of our newsletter or any important information about Historical Society events.