

Annual Meeting

Presents

BACK TO SCHOOL



Mt. Vernon School, 1908



St. Mary's School,
Pine Bluff, 1915

This year's annual meeting of the Mt. Horeb Area Historical Society will focus on the schools of Southwestern Dane County. The event is Oct. 14 starting at 2 p.m. at the Mt. Horeb Community Center, 107 N. Grove Street. A lineup of guest speakers will present various facets of the area's educational history from a "show and tell" of historic items found in the museum and archive holdings, to a photo presentation, insight on the restoration of an early school building and conversations with former students and teachers.

As early as there was regional settlement there were established institutions: churches, schools and town government. Dozens of wood frame, brick and stone school buildings were built in the surrounding countryside and small villages that made up the region. The earliest of these were constructed of log with simple handmade desks. Over time larger structures were built that contained two floors; these were generally located in the larger villages of Mt. Vernon, Daleyville, Blue



Blue Mounds
School, c. 1890

Mounds and Mt. Horeb. Church-run or parochial schools were also present with buildings operated at Pine Bluff, German Valley and Mt. Horeb. With the advent of school consolidation in the late 1950s the small rural schools were abandoned or converted into living spaces. Two larger rural public schools that were constructed at this time remained open until more recent times and they include La Follette Heights and Ridgeview. A larger church run school at Pine Bluff also remained open.

The rural schools became rallying points where neighbors got to know their neighbors and their children. Such groups as the Mothers' Club or the School Board were involved in the day-to-day operation of the school or raised money to buy supplies and playground equipment. Annual plays, talent shows and school "play days" were also popular.

The public is cordially invited to attend this session of higher rural education.

Collecting the Arts of Southwestern Dane County

Since the founding of the Historical Society in 1975 there has been a conscious decision to collect all forms of the area's arts, past and present. Some of these categories include literature, music, sculpture, pottery, cartoons and works in wood, ceramics, painting, needlework, folk art, performance and more.

Archives volunteer Gerry Glaeve has made it his passion in recent months to research and list as many of these local individuals as possible. Using the resources of both the archive and museum collections as well as online information, Gerry has compiled a growing list of approximately 100 past and present individuals that have made substantial contributions to the arts while living in Southwestern Dane County.



Gerry Glaeve holds "Looking North" by S. V. Medaris, a pastel drawing recently donated to MHAHS by the artist

Some well-known individuals on the list are Gunnar Johansen, Peggy Flora Zalucha, Marko Spalatin, Betty Sebenthall, Georgene Pomplun, Byron Jorns, Andrew Dahl, Aslak O. Lie, Marjorie King, S.V. Medaris and Bruce Fortney. Others include Julia Sutter, Mike Gross, E.E. Lie, Tom Brown, John Newhouse, Bruce Taylor, Fred Alley, Olga Edseth, Pat Edmundson, Larry Welo and Trygve E. Thoresen.



Oil on canvas "Blue Mounds, Fields in June" by Bruce Fortney was recently gifted to MHAHS

Through the years Society volunteers have worked hard to collect not only bios of the various individuals, but original works as well. The artists have been receptive and generous with their offerings. The most recent example of this is S.V. Medaris, whose work is snatched up as quickly as it is created. Medaris, of Perry township, recently donated "Looking North," a pastel depicting the rolling hills of Southwestern Dane County. Medaris' ever-changing art interests include traditional fine art media and digital design or illustration for print and web promotion. Another recent donation is a view of the Blue Mounds and surrounding rolling hills by large-format artist Bruce Fortney of Daleyville. Both of these works will be on view in the forthcoming exhibit "Natural Wonders & Human Interaction" scheduled to open at the museum in 2013.

If you know of artists that have worked, or are living in Southwestern Dane County contact Gerry Glaeve at 437-4151, archivist Shan Thomas on Mondays at 437- 6486, or Laurie Boyden at 437-6486.

If you have original artwork that was created by any of the artists of Southwestern Dane County and you wish to offer it to the Historical Society contact Laurie Boyden at 437-6486.

New Exhibit to Focus on Area Natural Wonders

“Natural Wonders & Human Interaction” premieres in the Centennial Gallery in spring 2013. This long-planned exhibit takes a historical look at the intimacy between humans and the natural environment of Southwestern Dane County.

The bypass of glacial movements thousands of years ago left Southwestern Dane County with a unique physical makeup. For centuries the area’s rock outcroppings, rolling hills, scenic valleys, rivers, streams and caves left untouched by these glaciers remained a continuous fascination, even rallying spot, for the area’s human inhabitants.

The exhibit, which will run for three years, will further explore the financial impact that the area’s topography has created, from automobile camping and park development to the discovery of Cave of the Mounds and the promotion of regional tourism.

“Natural Wonders & Human Interaction” will include the stories, art works, photographs and artifacts created and used by the peoples of the region from pre-settlement to the present to reveal this longtime love affair and fascination.

Large-format photos taken from the Mt. Horeb Area Historical Society’s extensive holdings will bring the exhibit to life. The photos show area inhabitants enjoying the local rock outcroppings and natural elements. The earliest photos date from 1875 when Andrew Dahl visited the area with his traveling camera and darkroom while finding a ready market for his images.



Blue Mounds

Works of original art, including a 4-foot by 8-foot water color of the Blue Mounds created in the 1940s by Byron Jorns, and recent pieces by contemporary artists living in Southwestern Dane County will be featured.

Artifacts will include promotional materials from the discovery of the Cave of the Mounds, an 1890s band uniform worn during a community gathering at Mt. Vernon’s “Big Spring” and 1920s picnic and camping gear.



The Cave of the Mounds, c.1940

Keeping Up With History

A church bulletin. A cellphone that doesn't take pictures. A tie-dyed T-shirt. An avocado fondue pot. A skateboard.

Think these aren't historical pieces? Think again.

Since its inception in 1975 the Historical Society has made a conscientious effort to keep current on history. What this means is that we must collect the history of tomorrow today.

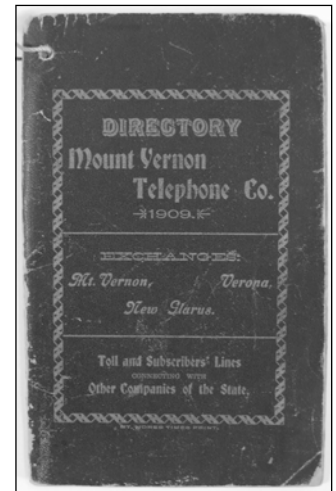
This unique way of looking at history has earned the Mt. Horeb Area Historical Society a place in Mary Bergin's book "Sidetracked in Wisconsin" and recognition from numerous historical institutions. Much of what we take for granted in everyday life is the common stuff that surrounds us. This "common stuff" actually defines us: the clothes we wear, the games we play, the furniture in our home, the phone we carry with us, the recycling bin we take weekly to the curb, the vehicle we drive, the town newspaper we read and the photos we take.

Many things are meant to be temporary: flyers announcing special events, emails, the bag we carry our groceries home in, the church bulletin, the paper plates for a special occasion, political yard signs and the telephone book. All of this is so much a part of our daily life in Southwestern Dane County that no matter if you have lived here for one week or 100 years we are interested in you and your artifacts – this is the stuff of the future.

Although the Historical Society and its curators keep abreast of what will be important representative artifacts for the future, they can't collect it all. Each of today's objects is weighed for the story it tells about us. For example, Society volunteers were kept busy during the recent gubernatorial recall election collecting materials that showed support for either side surrounding this historic event. In the future these

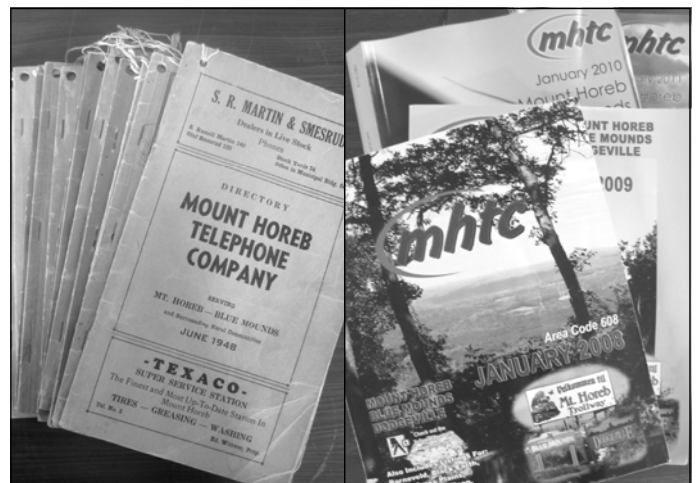
items will represent local reactions to the event.

Other items are less defined. For example the annual telephone directory is kept because it will tell us who was living here at any one time and which businesses were operating in a specific year. Just the fact that the book is getting thinner due to increased cellphone use makes a historical statement.



Mount Vernon Telephone Directory, 1909

For years the Historical Society has collected Victorian and ethnic furniture pieces, and these are important representations of their respective place in the timeline of regional history. So, when the children of the Arthur Field family of Mt. Horeb recently faced the task of cleaning out their parents' home they were surprised that along with the family papers and photos, Society curators selected a portion of the family's living room furnishings. The pieces, which were acquired around 1962, tell us that the Field family, like many other families in Southwestern Dane County was "keeping up with the



Early Mount Horeb Telephone Company directories c. 1948; recent directories from MHTC 2008-2011

The Mount Horeb Area Historical Society



Lamp and end table from the Arthur Field family, c. 1962

Joneses.” Having been successful in farming the family could afford to acquire the latest in design.

This furniture has much to say about the times in which it was produced as well. The rather Space Age design reveals the nation’s interest in the space program, and a post-World War II period of Modern-

ism. When the Fields moved off the farm and settled in their home on East Garfield Street the furniture followed them and became part of what was then the new trend of a lower-level recreational room.

When Historical Society curators were recently called upon by the family of Chuck Himsel, Mt. Horeb’s longtime fire department chief, they were just as enthusiastic about Chuck’s musi-

cal career artifacts as those associated with his fire department days. Together these materials tell the full story of how involved one individual was in the various aspects of the small town with which he became so associated.

The Historical Society also works on staying abreast of the various artists that make the region their home by collecting their biographies and their work. S.V. Medaris of Perry Township is one of the most recent donors to this effort as is Bruce Fortney of Daleyville. To date there are more than 100 past and present artists represented in the Society’s archive and museum holdings (see additional article).

To keep this trend of contemporary collecting up to date the Historical Society could use your help. Society curators are now especially looking for items associated with the community’s teen population.

Sought are a contemporary skateboard and skateboard clothing, as well as snowboarding equipment. Other items of interest are Boy and Girl Scout materials and a bicycle either used around town or on the bike trail. Also sought are items from youth sports teams, such as T-shirts, uniforms and equipment. Video games, trendsetting toys and a television converter box are also wanted. Additional items desired would pertain to the purchasing and serving of coffee at home, at church, at restaurants or local functions. These are items are needed for a future planned exhibit

The Society also seeks additions of items associated with musical groups or musicians both past and present and works by local artists, writers and performers past and present.

All items must have been used in or associated with the Southwestern Dane County region. If you have something to donate please contact Museum Director Laurie Boyden at 608-437-6486 or 608-437-8901.



Chuck Himsel’s name tag and medals from his participation in music activities at Mt. Horeb Schools, 1954-1960



List of Record Groups

- 1. Ag/Mining/Natural Resources**
- 2. Architectural Collection**
- 3. Artists/Authors/Musicians Collections**
- 4. Business Records**
- 5. Cemetery Records**
- 6. Church Records**
- 7. Civic/Non-Profit Organization Records**
- 8. Event & Festival Records**
- 9. Map Collection**
- 10. Media – Audio Collection**
- 11. Media – Visual Collection**
- 12. Military Collection**
- 13. Newspapers**
- 14. Oral Histories**
- 15. Personal Papers**
- 16. Photograph Collection**
- 17. School Records**
- 18. Telephone Directories**
- 19. Topical/Curatorial Collections**
- 20. Tourism Records**
- 21. Township Records**
- 22. Village Records**

tents of the collection and lists the contents by file folder within each archival box. This work helps us know just what it is we have and how we can best help people with research interests. The “Directory of Record Groups and Finding Guides” will be on the new MHAHS website.

The process of developing “Finding Guides” not only captures the stories in our collections, it also makes sure that all of the papers, books and photographs are properly stored. As we sort through boxes we re-fold the material, if necessary, using acid-free file folders or archival photograph envelopes. Then we re-box the folders in special archival boxes. Part of the Mt. Horeb Community Foundation grant purchased 376 archival boxes and 1,000 acid-free file folders. We have used nearly all of them to re-house the records we are finding.



Shan Thomas, Archivist, goes over the packing list for archival materials purchased through a grant from the Mt. Horeb Community Foundation

While all this was going on we were open for business as usual. We assisted 92 people in 2011 and so far this year. These included folks researching genealogy, house histories and business histories, as well as scholars and writers producing books on Norwegian American settlement patterns and the new kiosk on Military Ridge Recreational Trail at Blue Mounds Street.

Continued on page 8

The Mount Horeb Area Historical Society

Continued from page 7

In addition to helping people use what we have, we continue to collect papers, photographs and records of enduring historical significance to our area. A few highlights of the numerous donations we received over the last 18 months include: a Wisconsin Folk Museum board member records; the records of the American Legion Women's Auxiliary; records and personal papers of Joyce Powers and Prairie Ridge Nursery; mid-20th century records from the Donald farms; the records of the Hauge Lutheran Church Restoration Committee; and the records of the East Blue Mounds Lutheran Church Women's Group.

The MHAHS is grateful for the generous support of the Mt. Horeb Community Foundation and everyone who supports the Society for this project. We continue to improve the Archives and welcome researchers, donors and volunteers to the Historical Society Archives every Monday afternoon from noon until 4:00 pm or by appointment. Please call Shan Thomas at 608-437-1147 or email her at mthorebar-chives@mhtc.net to make arrangements for a time that is convenient for you.

Lend a Hand to the Archives

We have great projects for volunteers. Over the last year, Doug Nesheim has sorted through 63 cubic feet of photographs from the Cy Burns Collection and re-boxed them into subject categories. Gerry Glaeve has taken a particular interest in Record Group 3, the Works of Authors and Artists and has tripled the list of names of artists and authors whose work we have or are collecting. John Pare helped organize the postal history collection, moved on to the Postcards in the Photograph Record Group and now has taken the assignment of creating a "Finding Guide" for Record Group 17, School Records. If you are interested in architecture, local businesses, church

history, photographs, farming, rare books or any other fascinating area in our archives, we would like to hear from you. Please contact Shan Thomas or Laurie Boyden.

Family History Group

The Archives has a rich collection of materials that are of special interest to genealogists. These materials could be even more useful with some extra attention. If anyone is interested in forming a MHAHS Family History Working Group this winter, please contact Shan Thomas, Archivist, at 437-1147 or sithomas@mhtc.net or mthorebar-chives@mhtc.net.



Tom Brown cartoon from the collection



The Deneen family visited the Archives to view the Tom Brown collection

Background Photo: Tom Brown collection correspondence, c. 1930

What of the Building Fund?

You may be wondering by now why there has not been much talk, or press, regarding the building of the Southwestern Dane County Heritage Center. Although the fund has been steadily growing, much of this silence has been meticulously calculated by the Society's Board of Directors. Be assured there has been plenty going on behind the scene.

You may remember the special invitation and the grand gathering of membership at the home of Tony and Peggy Zalucha some time back. Those of you in attendance, while enjoying beautiful works of art, special treats, wine and beverages, also heard President Brian Bigler spell out the detailed needs of the Society and a formative plan to raise \$2.1 million for phase II of the Heritage Center. This public gathering and announcement was not the last event or word – the Board has not sat idle.

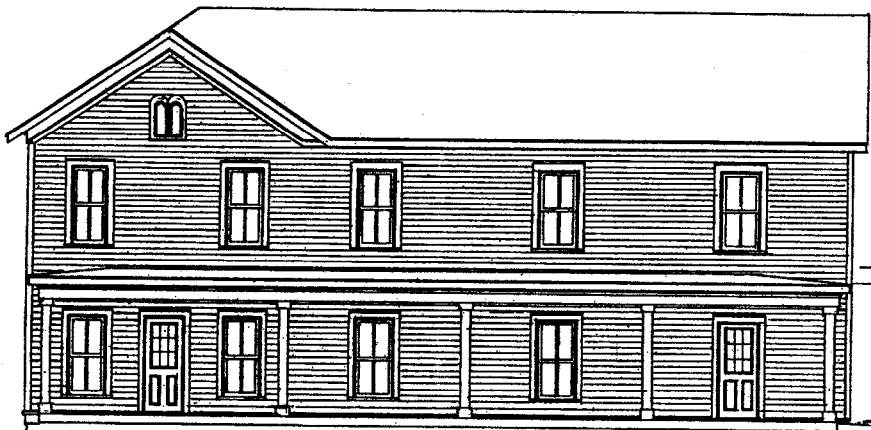
For more than two years the Board has worked tirelessly drawing up plans of action, identifying potential major donors and taking a serious look at the Historical Society and all of its departments and functions. The result of all of this labor has been numerous meetings and calls to potential major donors with more to come. In addition, an extensive "Comprehensive Master Plan" has been created. There are now detailed renderings of the Heritage Center's exterior and interior spaces

with the drafts nearing completion. A public announcement of this major fundraising kickoff is forthcoming.

Also, some of you may have noticed a series of monthly articles in the Mount Horeb Mail newspaper. The space for these has been graciously offered by the Mail and they are intended to create interest in the Historical Society and to give nonmembers a glimpse of the Society's collections and overall programming. These articles were also created to give those who feel they have played no part in Southwestern Dane County's history a feeling that they do indeed play a role in its making. In November a press release will appear in this column announcing this major fundraising kickoff.

The membership will get a first-hand introduction to the Comprehensive Plan and the building's architectural drawings at the Society's annual meeting on Oct. 14. There is much excitement about the fundraising adventure and the Board is encouraging all to spread the word about this milestone in the organization's long history.

If you have questions about the fundraising kickoff or the Society's Comprehensive Plan, or if you are unable to attend the annual meeting and would like a copy, phone the Society's office at 608-437-6486, or contact any one of the Board of Directors listed on your newsletter for more information.



Line drawing of the 2nd Street entrance of the proposed building for the Southwestern Dane County Heritage Center

Technology Places the Society in the 21st Century

Historical Society staff and volunteers can finally access the internet and share information between offices thanks to generous gifts from the Mt. Horeb Rotary Club, Dave Boyden and Donna Read. New computers, printer and scanner have made life much easier. John Rivest from Troll Bytes was the consultant and installation specialist for the project.

Internet access makes it possible to research museum objects at a faster pace or to locate genealogical information. The new printer and scanner allows for in-house reproduction of photos and documents both for public and exhibit use.

With the new changes in place Museum Director Laurie Boyden's duties were expanded to include the design of a new web site. She is being assisted by Jane Burns and Tamlyn Akins, a local artist and designer. Laurie will also handle the production of "Mt. Horeb Past Times," the Society's newsletter.

*New website online soon!
Check it out!
mthorebhistory.org*

Then & Now books still available!



Purchase your books in the Museum Shop
Price:\$45

If we happen to not be open, the Prairie Bookshop at the corner of Main and 2nd has copies for sale also.

Last Chance to View Quilt Exhibit in the Centennial Gallery

If you haven't had a chance to see it yet, there's still a few months left to enjoy these stunning historic quilts and their stories. The exhibit "Stories in Stitches: Quilts of Southwestern Dane County" in the Mt. Horeb Area Museum will run through December. Quilts dating from 1855-1998 were selected from the Historical Society's extensive textile collections for the poignant stories they tell us.



These objects represent the technological changes and life experiences that occurred both nationally and in Southwestern Dane County. There are stories of anniversaries and reunions, settlement and war, mortality and the Great Depression revealed through the crafting of these everyday bed coverings and works of art.



Museum hours are listed on the back cover of the newsletter.

The Mount Horeb Area Historical Society

Thank You Tim



For more than 16 years Tim White has tirelessly worked behind the scenes to make the Society's newsletter "Past Times" a major part of the Historical Society's public presence. For each issue he would gather the appropriate photos and images, and insert them into the provided text to

assemble a professional looking publication. After this process he would drive the files to the printer and pick up the completed product.

Tim placed the same amount of attention to detail in his work on the Society's web pages where he built the site from scratch adding his own unique touches and making the Historical Society known to the World Wide Web audience.

With the recent technology improvements these duties have been turned over to Laurie Boyden. The Society's Board of Directors and the community at large are ever grateful for Tim's many years of tireless service to the website and newsletter. We look forward to his continued participation in the ongoing programs and activities of the Historical Society. Thank you, Tim!

BBC Films at Museum

It was only a few minutes, but the BBC (British Broadcasting Corporation) film crew from Scotland stopped by the museum in August to video the "Chicken Thief" troll created by local artist Mike Feeney. The trolls around the area will be the subject for an upcoming children's program called "All Over The Place," which will air first in Great Britain in November then about six months later internationally.



Mike Feeney (under the Norwegian flag) and the film crew from the BBC; local troll tour guide Gail Schomish (in costume) lent some guidance

Annual Membership in the Mt. Horeb Area Historical Society



☐ New Member ☐ Renewal

Name _____

Address _____

City _____ State _____ Zip Code _____

Phone (____) _____ E-mail _____

Membership Levels (Renewal to be paid annually in January)

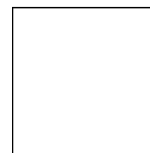
☐ \$20 Individual ☐ \$35 Household ☐ \$75 Contributing ☐ \$150 Sustaining ☐ \$500 Patron

Additional Donations To:

Museum/Society Operations \$ _____ Contingency Fund \$ _____ Building Fund \$ _____

Mail to: Mt. Horeb Area Historical Society, 138 East Main St., Mt. Horeb, WI 53572 All contributions are tax deductible.

We Depend On You! Thank you for your support.



**Mt. Horeb Area Historical Society
Board of Directors**

Brian J. Bigler-President
Tony Zalucha-Vice President
Donna Read-Secretary
Darlene Nowak-Treasurer

Jane Burns
Marlyn Grinde (*Honorary*)
Ruth Haglund
Larry Kruckman
Shirley Martin
Doug Nesheim
John Pare
Peter Riphahn
Lee Underwood
Connie Jo Zwettler

Curators:

Marlyn Grinde
Lee Underwood
Donna Read-Archeology
Marietta Gribb-Costumes, Textiles, Dolls

Operations:

Laurie Boyden-Museum Director/Newsletter
Jane Burns-Newsletter Editor
Shan Thomas-Archivist (for appt. 437-1147)

Archives Hours:

Archival Collections Research/Drop off
Mondays Noon-4:00
Museum Collections Research/Drop-off
2nd & 4th Wednesdays each month 12:30-3:00
3rd floor of the Municipal Building
138 E. Main St., Mt. Horeb, WI
608-437-6486

Mt. Horeb Area Museum and Shop
Hours: Friday and Saturday 10 a.m. - 4 p.m.
Sunday 12:30 p.m. - 4 p.m.
100 S. 2nd Street, Mt. Horeb, WI
Open May - December
Free Admission

**Mt. Horeb Area Historical Society
Annual Meeting**

"BACK TO SCHOOL"

October 14, 2012 at 2 pm
Mt. Horeb
Community Center
107 N. Grove St.
Mt. Horeb, WI

Presentations by guest speakers on the area's educational
history of the rural schools of Southwestern Dane County

September newsletter contributors:

Brian Bigler
Shan Thomas
Laurie Boyden
Edited by Jane Burns with current photography by Laurie
Boyden and Gerry Glaeve; historic photos from the ar-
chival collections of Mt. Horeb Area Historical Society

F. Y. I. FOR CURRENT MEMBERS: Your membership
expiration date is printed on the mailing label of this newslet-
ter. Please check to see if you are up to date through Jan.
13 or beyond. If not, your membership is due. Please fill out
the form on page 11 and send it with your payment. We
appreciate your renewal and don't want you to miss a single
issue of our newsletter or any important information about
Historical Society events.